



GMT MONTHLY MEMBERSHIP PROGRESS REPORT

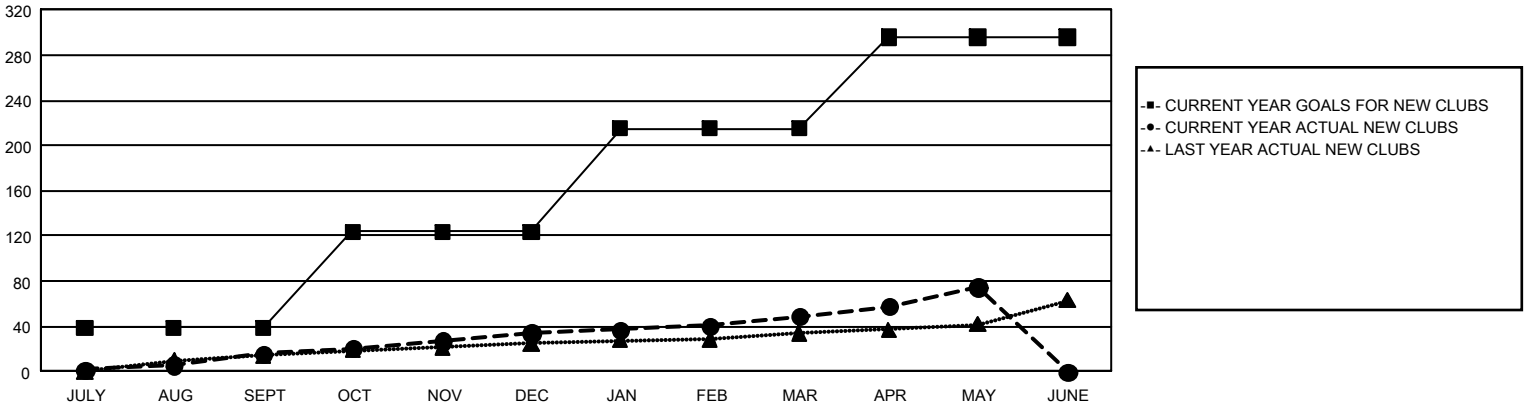
GAT Constitutional Area 1

Results as of: 5/31/2024

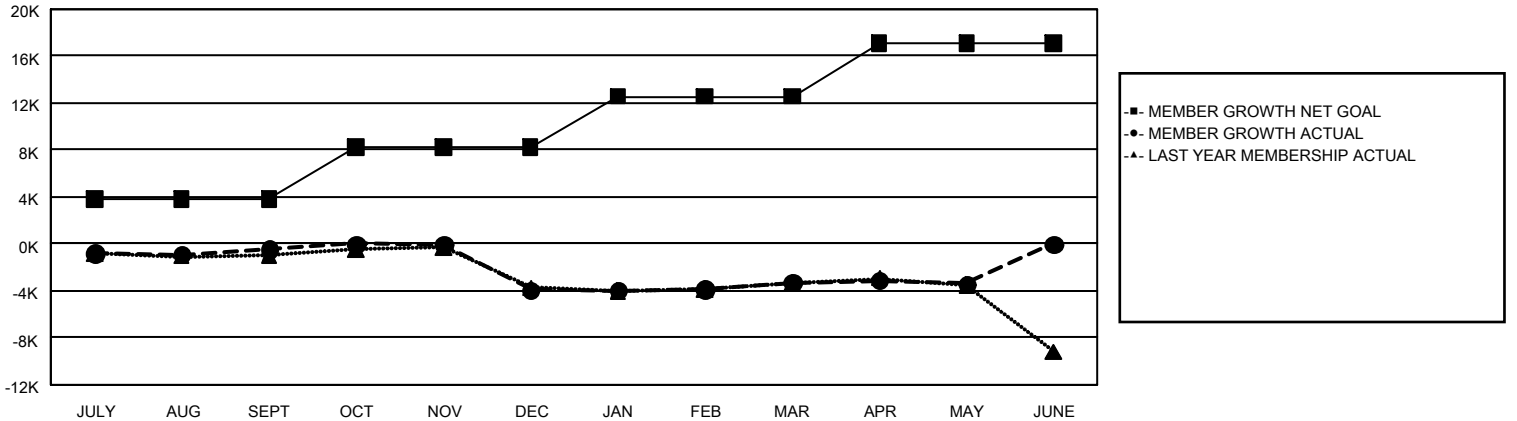
REPORT DOES NOT INCLUDE CLUBS IN UNDISTRICTED AREAS.

Clubs				Members			
RESULTS FOR 2023-2024				RESULTS FOR 2023-2024			
QUARTER	NEW CLUB GOAL	NEW CLUBS	DROPPED CLUBS	QUARTER	MEMBER GROWTH NET GOAL	MEMBER GROWTH ACTUAL	DROPPED MEMBERS ACTUAL (including transfers)
JULY/AUG/SEPT	39	16	62	JULY/AUG/SEPT	3,838	8,134	7,639
OCT/NOV/DEC	85	18	128	OCT/NOV/DEC	4,390	6,976	9,688
JAN/FEB/MAR	91	15	33	JAN/FEB/MAR	4,337	7,825	6,388
APR/MAY/JUNE	81	26	14	APR/MAY/JUNE	4,578	4,864	4,540

GOALS AND ACTUAL NEW CLUBS CUMULATIVE



GOALS AND ACTUAL MEMBERS CUMULATIVE



DROPPED CLUBS: 236

6,031 CLUBS OF 10,157 ADDED 1 OR MORE NEW MEMBERS

GENDER DISTRIBUTION

MALE 167,157 (63.17%)
 FEMALE 97,317 (36.78%)

DROPPED MEMBERS

DECEASED	3,835
CLUB CANCELLED	1,498
OTHER	22,866
TOTAL	28,199

[CLICK HERE FOR CUMULATIVE MEMBERSHIP DATA](#)

TOTAL FAMILY UNIT MEMBERS	51,676
FAMILY MEMBERS PAYING HALF DUES	26,641